

TERIS TECH

Enable Operation to precision

Assist filming to perfection

professional imaging support equipments
manufacturer



Head Office

TERIS (BEIJING) TECH TRADE CO., LTD.
Address: NO.133, East area A35-6, Gaobeidian,
Chaoyang District, Beijing, China.
Tel: +86-10-52895990
E-mail: service@teris-tech.com
Website: www.teris-tech.com

Manufacturer

TERIS (TIANJIN) FILM AND TELEVISION EQUIPMENT TECHNOLOGY CO., LTD
Address: Zhenguang Street No.8, Shuangtang town, Jinghai County, Tianjin, China.
Tel: +86-10-52895990
E-mail: service@teris-tech.com
Website: www.teris-tech.com

TERIS

www.teris-tech.com



TERIS kit series	Fluid head	Tripod
TERIS TCE PLUS kit	TERIS TCE PLUS fluid head	TERIS TS1475 tripod
TERIS TS50 kit	TERIS TS50 fluid head	TERIS TS416 tripod
TERIS TS-N6 PLUS kit	TERIS TS-N6 PLUS fluid head	TERIS TS1610 tripod
TERIS TS100 kit	TERIS TS100 fluid head	TERIS TS2210 tripod
TERIS TS120 kit	TERIS TS120 fluid head	TERIS TS2215 tripod
TERIS TS150 kit	TERIS TS150 fluid head	TERIS CINE tripod
TERIS TS300 kit	TERIS TS300 fluid head	TERIS TSD30s Tripod Dolly
TERIS TS350 kit	TERIS TS350 fluid head	TERIS TSD30 Tripod Dolly
TERIS TS900 kit	TERIS TS900 fluid head	TERIS Short tripod



TCE-AL PLUS & TCE-CF PLUS

Technology creates elevation. Professional light-weight fluid head tripod kit.

The new formulation material of TCE is a kind of PPS material with high quality, toughness and rigidity and good comprehensive ability. At the same time, TCE adopts the design of one-time forming on the shell to optimize the processing and assembly process and reduce the production cost. With its civil price, light weight, compact appearance and 7kg payload, easy to be compatible with Z280 FS5 X70 Z90 A7S 5D Zcam DVX200 and many other models, suitable for TV reporters reality show shooting wedding and individual enthusiasts.



TCE PLUS Specifications of the Fluid Head

Max Payload	7 kg
Tilt Drag	0-3
Pan Drag	0-3
Counter Balance	0-3
Bowl Diameter	75 mm
Head Weight	1.77 kg
Temperature Range	-40°C/+60°C
Tilt Range	+90° /-75°
Spirit Level	Bubble

Specifications of the Kit

Kit Type	Material	Kit Weight	Height range	Spreader type	Bowl Size	Leg Stages
TCE-AL PLUS	Aluminum	4.6 kg	720-1610 mm	Mid-level spreader	75 mm	2
TCE-CF PLUS	Carbon Fiber	4.3 kg	720-1610 mm	Mid-level spreader	75 mm	2



TCE-AL PLUS



TCE-CF PLUS





TS50AL & TS50CF

Lightweight durable fluid head&tripod system.

TS50 fluid head adopts fix drag and counterbalance with max payload 5kg. It is suitable for 5D, EX280 and hand held cameras, etc. Lightweight design makes it be more suitable for reality shows, news interviews and other needs of mobility of the shooting mission. The new structural design makes it become the most durable product in the lightweight tripod.



TS50 Specifications of the Fluid Head

Max Payload	5 kg
Tilt Drag	FIX
Pan Drag	FIX
Counter Balance	FIX
Bowl Diameter	75 mm
Head Weight	1.78 kg
Temperature Range	-40°C/+60°C
Tilt Range	+90° /-75°
Spirit Level	Bubble

Specifications of the Kit

Kit Type	Material	Kit Weight	Max Height	Min Height	Bowl Size	Leg Stages
TS50AL	Aluminum	4.7 kg	1510 mm	855 mm	75 mm	1
TS50CF	Carbon Fiber	5.0 kg	1510 mm	855 mm	75 mm	1



TS50AL



TS50CF





TS-N6AL PLUS & TS-N6CF PLUS & TS-N6CF-Q PLUS

Lightweight and durable products for renting
create new and original product durable in use



TS-N6 PLUS Specifications of the Fluid Head

Max Payload	7 kg
Tilt Drag	0-3
Pan Drag	0-3
Counter Balance	0-3
Bowl Diameter	75 mm
Head Weight	2.18 kg
Temperature Range	-40°C/+60°C
Tilt Range	+90° /-75°
Spirit Level	Bubble

Specifications of the Kit

Kit Type	Material	Kit Weight	Max Height	Min Height	Bowl Size	Leg Stages
TS-N6AL PLUS	Aluminum	4.85 kg	1610 mm	720 mm	75 mm	2
TS-N6CF PLUS	Carbon Fiber	4.70 kg	1610 mm	720 mm	75mm	2
TS-N6CF-Q PLUS	Carbon Fiber	6.21 kg	1770 mm	675 mm	75mm	2





TS100AL & TS100CF & TS100CF-Q

ENG-renowned light fluid head&tripod system

TS100 fluid head supports a wide range of camera models and configuration with payload range 4-12 kg. Its superior performance and fine workmanship make it become the first choice for cost-effective tripod system at home and abroad.



TS100 Specifications of the Fluid Head

Max Payload	12 kg
Tilt Drag	0-3
Pan Drag	0-3
Counter Balance	0-7
Bowl Diameter	100 mm
Head Weight	2.67 kg
Temperature Range	-40°C / +60°C
Tilt Range	+90° / -75°
Spirit Level	Bubble

Specifications of the Kit

Kit Type	Material	Kit Weight	Max Height	Min Height	Bowl Size	Leg Stages
TS100AL	Aluminum	6.98 kg	1760 mm	670 mm	100 mm	2
TS100CF	Carbon Fiber	6.79 kg	1760 mm	670 mm	100 mm	2
TS100CF-Q	Carbon Fiber	6.72 kg	1760 mm	670 mm	100 mm	2

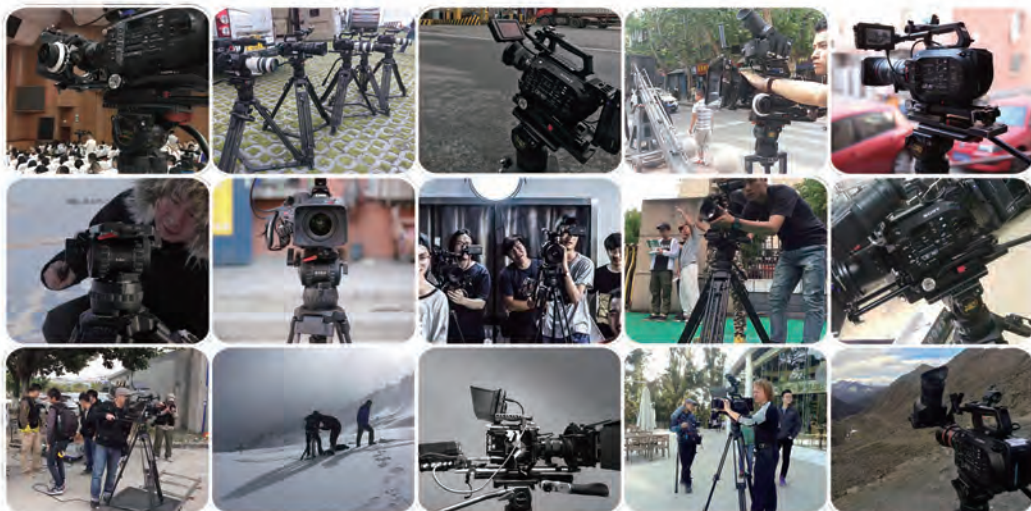




TS120AL & TS120CF & TS120CF-Q

Professional ENG fluid head & tripod system

TS120 fluid head performs and features fully to meet the stability requirement of TV documentary and studio shooting. The functionality, durability and the professional counterbalance performance of 6+6 are integrated into an easy-to-handle fluid head, which offers the broadest and smoothest range of its kind. It is beyond the photographer's precision and quality of the imagination.



TS120 Specifications of the Fluid Head

Max Payload	15 kg
Tilt Drag	0-5
Pan Drag	0-5
Counter Balance	0-7
Bowl Diameter	100 mm
Head Weight	3.09 kg
Temperature Range	-40°C/+60°C
Tilt Range	+90° /-75°
Spirit Level	Bubble with Led light

Specifications of the Kit

Kit Type	Material	Kit Weight	Max Height	Min Height	Bowl Size	Leg Stages
TS120AL	Aluminum	7.21 kg	1780 mm	690 mm	100 mm	2
TS120CF	Carbon Fiber	7.08 kg	1780 mm	690 mm	100 mm	2
TS120CF-Q	Carbon Fiber	7.13 kg	1780 mm	695 mm	100 mm	2





TS150AL& TS150CF& TS150CF-Q

Heavy-duty ENG fluid head&tripod system

TS150 fluid head performs and characteristics not only for TV documentary and studio shooting, but also support for light commercials, Network drama and micro filming. It is compatible with all kinds of radio and television equipment, like the popular RAVEN, VARICAM-LT and other equipment. TS150 provides perfect support for low budget film production program.



TS150 Specifications of the Fluid Head

Max Payload	20 kg
Tilt Drag	0-7
Pan Drag	0-7
Counter Balance	0-7
Balance Step Button	1 step
Bowl Diameter	100 mm
Head Weight	3.56 kg
Temperature Range	-40°C/+60°C
Tilt Range	+90° /-75°
Spirit Level	Bubble with Led light

Specifications of the Kit

Kit Type	Material	Kit Weight	Max Height	Min Height	Bowl Size	Leg Stages
TS150AL	Aluminum	7.87 kg	1780 mm	690 mm	100 mm	2
TS150CF	Carbon Fiber	7.68 kg	1780 mm	690 mm	100 mm	2
TS150CF-Q	Carbon Fiber	7.87 kg	1780 mm	690 mm	100 mm	2





TS300CF

Heavy-duty EFP fluid head&tripod system

TS300 fluid head with 8+8 gear settings, is perfect solution for film and television drama& documentaries, especially for long shots , more suitable for telephoto EFP pan. It is equipped with a wide range of pan & tilt and counterbalance positions, offers operators silky smooth movement and precise motion tracking.



TS300 Specifications of the Fluid Head

Max Payload	30 kg
Tilt Drag	0-7
Pan Drag	0-7
Counter Balance	0-7
Balance Step Button	2Step
Bowl Diameter	100 mm
Head Weight	4.96 kg
Temperature Range	-40°C/+60°C
Tilt Range	+90° /-75°
Spirit Level	Bubble with Led light

Specifications of the Kit

Kit Type	Material	Kit Weight	Max Height	Min Height	Bowl Size	Leg Stages
TS300CF	Carbon Fiber	10.9 kg	1910 mm	800 mm	100 mm	2

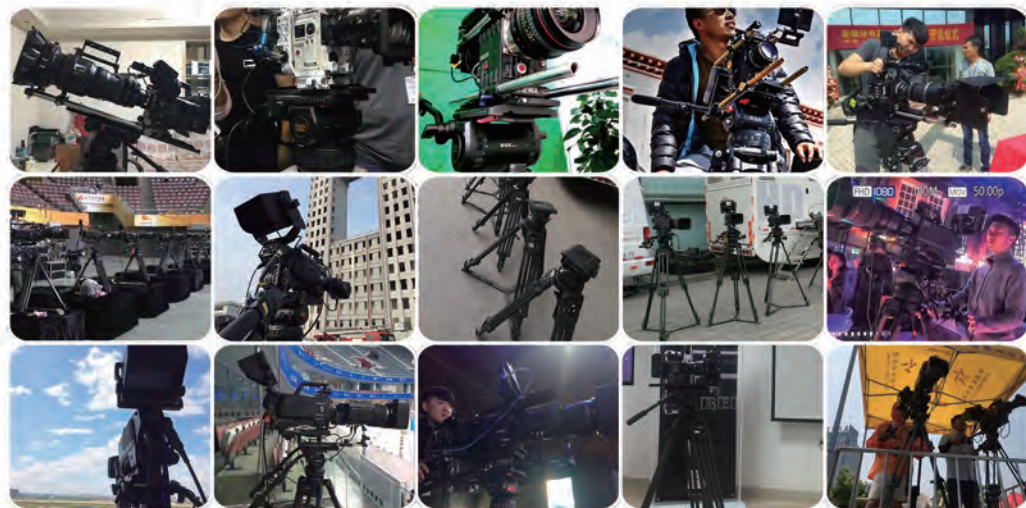




TS350CF

Classic heavy-duty EFP fluid head&tripod system

TS350 fluid head is perfect solution for EFP, OB and studio application, which provides a very stable and reliable 150mm bowl support, easy to balance the payload from 10kg to 40kg. Improved drag adjustment enhances the smoothness of head movement, matching the quality of most famous brand.



TS350 Specifications of the Fluid Head

Max Payload	40 kg
Tilt Drag	0-7
Pan Drag	0-7
Counter Balance	0-7
Balance Step Button	3Step
Bowl Diameter	150 mm
Head Weight	7.15 kg
Temperature Range	-40°C/+60°C
Tilt Range	+90° /-75°
Spirit Level	Bubble with Led light

Specifications of the Kit

Kit Type	Material	Kit Weight	Max Height	Min Height	Bowl Size	Leg Stages
TS350CF	Carbon Fiber	13.3 kg	1910 mm	800 mm	150 mm	2





TS900 Specifications of the Fluid Head

Max Payload	90 kg
Tilt Drag	0-7
Pan Drag	0-7
Counter Balance	0-7
Balance Step Button	8Step
Bowl Diameter	150 mm
Head Weight	13.6 kg
Temperature Range	-40°C/+60°C
Tilt Range	+80° /-63°
Spirit Level	Bubble with Led light

Specifications of the Kit

Kit Type	Material	Kit Weight	Max Height	Min Height	Bowl Size	Leg Stages
TS900CF	Carbon Fiber	23 kg	1900 mm	1060 mm	150 mm	1

TS900CF

150mm flat base design, best choice for box lens

TS900 fluid head provides a more secure and reliable 150mm flat base support to the broadcasting team.

150mm flat base design with max payload 90kg, and 64x balance combinations, which give you more delicate balance adjustment. The 90kg equipment makes you the feeling of operation at your fingertips.



TS900CF



Safety lock design
Double protection makes
the equipment more secure



8x balance adjustment knob
Achieve 64 x balance
combinations



150mm flat base design
Make fluid head more stable



V-type quick mounting plate
Ball screw adjustment makes
it easier



100mm Shot Tripod

Type	Material	Weight	Max Height	Min Height	Bowl Size	Payload
TS2210 MINI	Carbon Fiber	3.8 kg	610 mm	160 mm	100 mm	50 kg
TS1060AL	Aluminum	3.3 kg	600 mm	100 mm	100 mm	30 kg
TS1075AL	Aluminum	3.3 kg	600 mm	100 mm	75 mm	30 kg



Portable soft bag

Size(cm)	94*20*17
Applicable Type	TS100/TS120 TS150



Soft bag with wheels

Size(cm)	100*22*20
Applicable Type	TS300/TS350



TS-D30S Heavy duty Dolly

Payload	100 kg
Weight	4.9 kg
Radius	540 mm
Wheel diameter	100 mm

TS-D20S Light duty Dolly

Payload	50 kg
Weight	3.2 kg
Radius	500 mm
Wheel diameter	100 mm

TS-D30 Heavy duty Dolly

Payload	100 kg
Weight	4.9 kg
Radius	540 mm
Wheel diameter	100 mm



Barrel-90/Barrel-100 Aviation barrel

Height(cm)	90 - 100
Diameter(cm)	24
Applicable Type	All Type



TS-VCT-14 Camera plate

Weight	827 g
Size	282*80*27 mm

CINE Series of Film High-Medium-Low Tripods



CINE-H
High Tripod

Max height
1750_{mm}
Weight
10.27_{kg}



CINE-M
Medium Tripod

Max Height
870_{mm}
Weight
9.23_{kg}

NEW

New connection structure design

100%

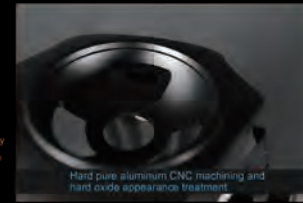
Two-way interwoven carbon fiber tube

CNC

Hard aluminum fine processing



A structural stability of the bowl and bracket connection design



Hard pure aluminum CNC machining and hard oxide appearance treatment



25mm high-hardness two-way interwoven 100% pure carbon fiber tube

Tenis film tripod provides a structural stability of the bowl and bracket connection design. Using hard pure aluminum CNC machining and hard oxide appearance treatment, with 25mm high-hardness two-way interwoven 100% pure carbon fiber tube. Makes them natural, upscale atmosphere. The overall more durable, no longer because of loose screws and create gaps. Everywhere have adopted a very strong industrial structure design and high index material!

CINE Series of Film High-Medium-Low Tripods

Type	Material	Weight	Height Range	Max Payload	Diameter	Bowl Size
CINE-H	Carbon Fiber	10.27 kg	970-1750 mm	300kg	24 mm	150 mm
CINE-M	Carbon Fiber	9.23 kg	570-870 mm	300kg	24 mm	150 mm
CINE-L	Aluminum	4.70 kg	150 mm	300kg	/	150 mm

Teris JQ40-III /JQ50- II Carbon Fiber Mini Jib



Teris JQ40-III /JQ50-11, the first carbon fiber mini jib to be compatible with OJ RoninS/RS2 and ZHIYUN Crane2.



Model	Weight	Full length	Retract length	Transport Length	Compatible with
JQ40-III	5.2KG	400cm	290cm	131cm	OJ RoninS/RS2&ZHIYUN Crane2
JQ50- II	7.1KG	500cm	390cm	131 cm	OJ RoninS/RS2&ZHIYUN Crane2

Configuration list



Dedo Weigert Film GmbH
 Karl-Weinmair-Str. 10 · D-80807 Munich
 Tel.: +49 (0)89 - 356 16 01 · Fax: +49 (0)89 - 356 60 86
 e-mail: info@dedoweigertfilm.de · www.dedoweigertfilm.de